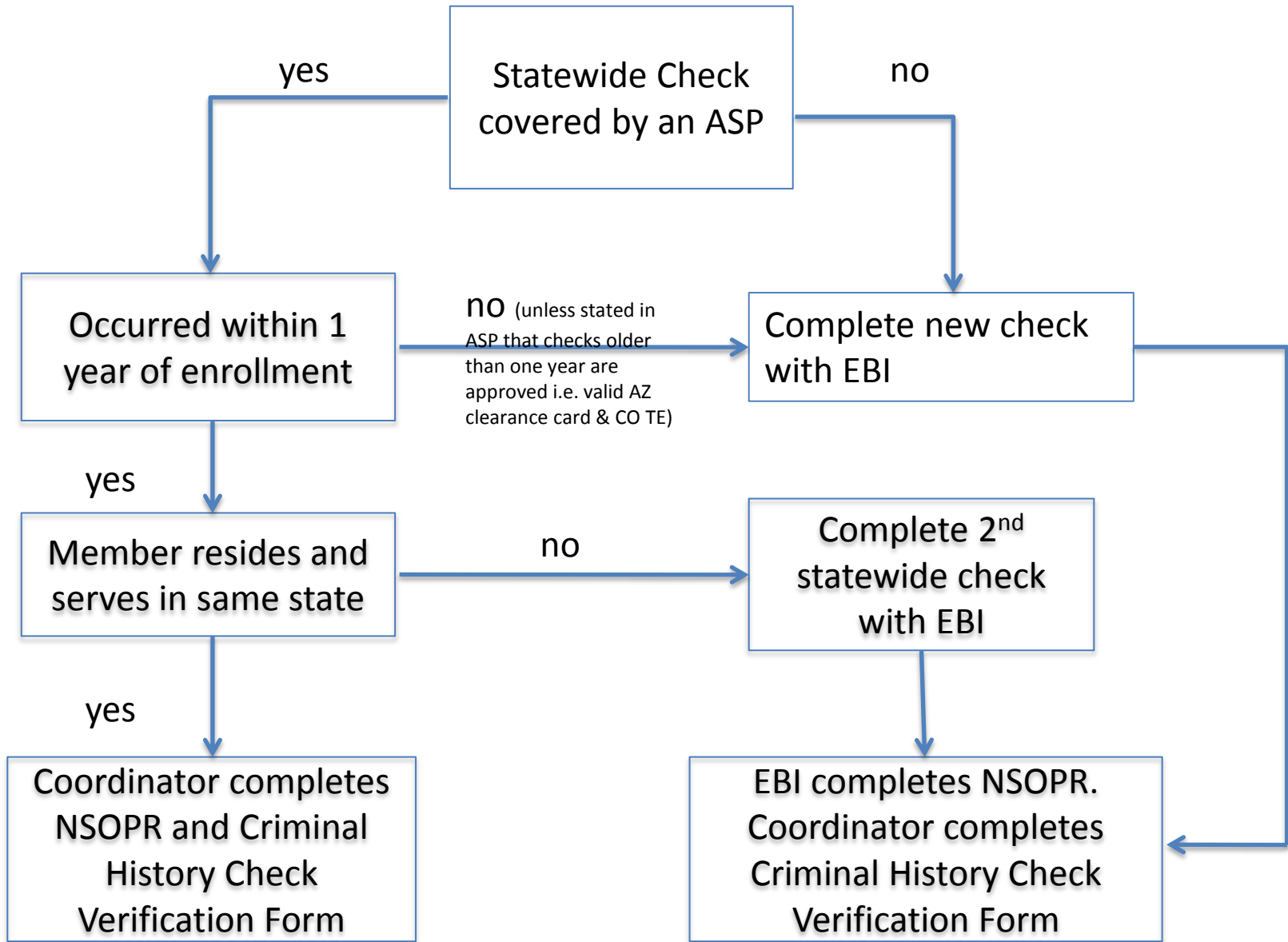
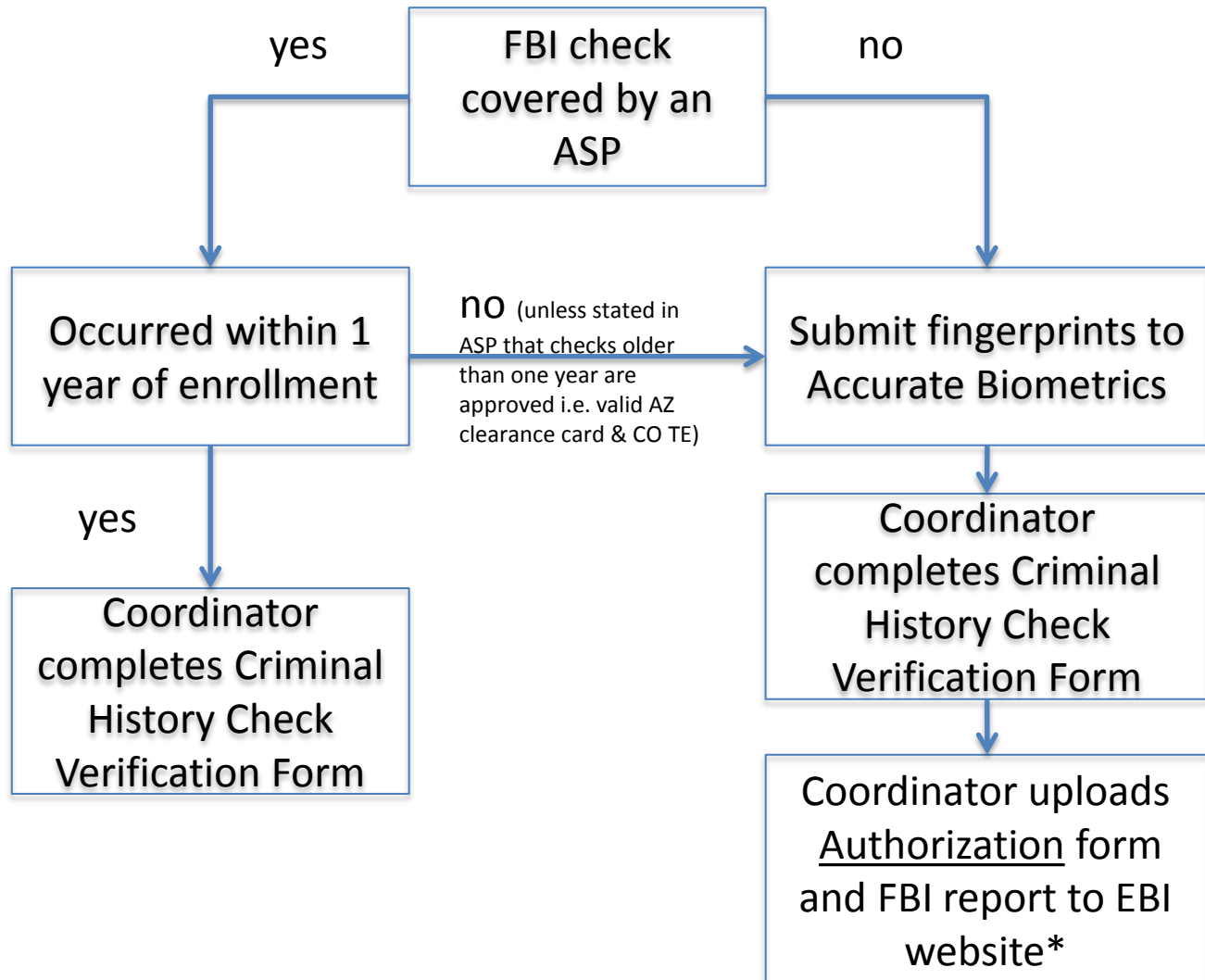


Statewide and NSOPR Criminal History Check Flowchart



FBI Criminal History Check Flowchart



*Coordinator must initiate Member's statewide check with EBI PRIOR to uploading authorization form and FBI report. If your Member is covered by a statewide ASP, and EBI will not be used to run a statewide check, then the FBI report should be faxed to the CCMW office, NOT uploaded to EBI.